

Technical data sheet

All right reserved Landa illuminotecnica S.p.A.
will reserve to change the specific note without
any written notice.

LANDA[®]
illuminotecnica

Kami

| |
|---|
| Article 9010L12H |
| Product type Wall Version |
| Body material Die-casting aluminium EN47100 prior the painting process, washed with stones. Painting made by polyester powder with high resistant against oxidation. |
| Opal polycarbonate diffuser UV protected and silicon gaskets |
| |
| Screws in A2 stainless steel |
| |
| Transformer included. |

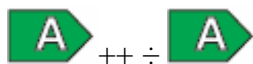
IP65
850°C

Powered by
Citizen Electronics LED

10W 1100LM 3000°K RA80



CE



Colours available:

Graphite



nhg

Black



ngg

Metalgrey



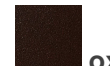
all

White

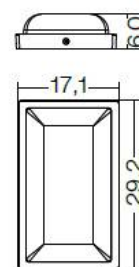


bgg

Oxide



oxi



Photometric data

coming soon