

INNOVA WB ABS

NEW



... chemically resistant, for areas with low ceilings of 2.5 – 5 m.

USE

Closed non-dismountable light fitting intended for chemically challenging or agricultural premises with incidence of vapours like ammonia, lye, alkaline compounds and hot water (hydrolysis). Thanks to the **Wide Beam** optics it is suitable for inside spaces with low ceilings, intended for suspension height from 2.5 to 5 m, e.g. **inside walls and corridors of low agricultural and industrial buildings, workshops, corridors, cellars, farms, stables and laboratories** without explosion hazard. The structural design of the light fitting (IP69) allows even placement in food-processing industry - HACCP.

The light fitting resists dust, humidity and washing with spouting water up to 80°C. The body made of ABS material and the diffuser made of AC material have high chemical resistance.

Easy, fast and maximally **efficient mounting is achieved when using the cables with connectors delivered by us**; for more information see page 26.

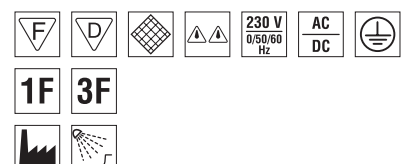
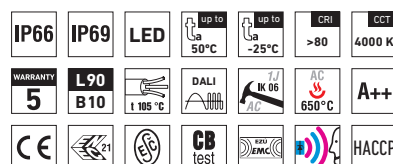
Emissions in the environment of use may reduce the usability of the plastics; for more information see page 167.

ADVANTAGES

- Light fitting protection **IP66 / IP69**
- High temperature resistance in a range from $t_a = -25^\circ\text{C}$ to $t_a = 50^\circ\text{C}$
- Lifetime: 50 000 hours / L90B10
- High chemical resistance
- Wide Beam (WB), ceiling height 2.5 to 5 m
- **Optional delivery of supply cables with connectors in specific required length**
- Optional arrangement of light fittings in line without gaps
- Variable suspension pitch; optional installation of light fitting even on an existing structure on which the original light fittings were suspended
- **Fully automatic 100% control of functionality and tightness (leak test) during production**

- Simple and fast mounting thanks to original cables and flexible mounting pitch at the light fitting
- Easy cleaning and maintenance without need of replacing the light sources
- Eliminated risk of mechanical and electrostatic damage to LED chips
- Optional throughwiring (up to 7 wires inside the light fitting)
- Optional delivery in dimmable version
- Certificates: **ESĚ, ENEC, CB, HACCP**

www.innova.lighting/en 

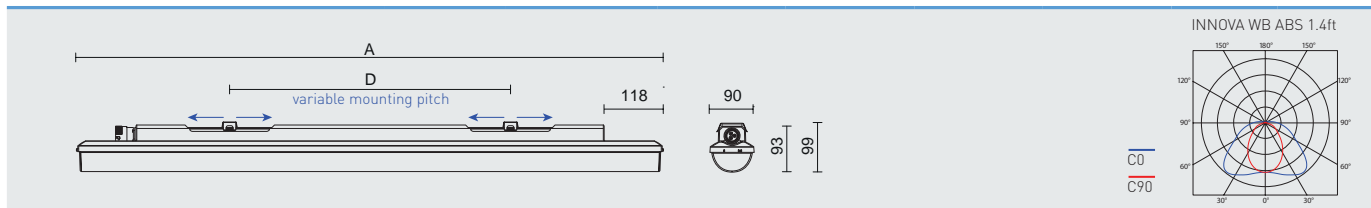


INNOVA WB ABS



TECHNICAL DESCRIPTION

- Light fitting protection: **IP66 / IP69**
- Maximum ambient temperature: **ta = 50 °C**
- Lifetime: 50 000 hours / L90B10
- Maximum light fitting efficiency: 131 lm/W
- **CRI > 80: 4000 K** – standard
- CRI > 80: 3000 K, 5000 K, 6500 K - on request
- CRI > 90: 3000 K, 4000 K - on request
- Diffuser: transparent AC with Fresnel lenses, Wide Beam (high chemical resistance, UV stability)
- Body: dark grey ABS (high chemical resistance, UV stability)
- Cable with one connector for connection of the light fitting to the voltage source in a distance of 1 m, 3 m or in a requested length
- Interconnection cable with two connectors for mutual spacing between light fittings of 0 m, 1 m, 3 m or for requested spacing
- **Connectors with 3, 5 or 7 poles, wire section 1.5 or 2.5 mm²**
- Optional constant luminous flux (CLO) in DALI version
- Electric equipment: LED modules, fixed output driver or DALI driver
- The package includes: stainless hooks and stainless brackets
- The values stated for power consumption and luminous flux are in a tolerance of ± 7,5 %



Type	Max. ambient temperature [°C]	Luminous flux of LED modules [lm]	Luminous flux of light fitting [lm]	Power consumption [W]	System efficacy [lm/W]	Net weight [kg]	A [mm]	D [mm]
Up to ambient temperature ta = 50 °C - body: dark grey ABS - diffuser with Fresnel lenses, WB (Wide Beam), transparent acrylate								
INNOVA 1.4ft WB ABS 2600/840	50	2600	2270	18	126	1,5	1175	420 - 700
INNOVA 1.4ft WB ABS 3200/840	50	3200	2810	22	128	1,5	1175	420 - 700
INNOVA 1.4ft WB ABS 4400/840	45	4400	3850	30	128	1,5	1175	420 - 700
INNOVA 1.4ft WB ABS 6400/840	45	6400	5540	43	129	1,5	1175	420 - 700
INNOVA 1.5ft WB ABS 3250/840	50	3250	2750	22	125	1,8	1455	700 - 980
INNOVA 1.5ft WB ABS 4000/840	50	4000	3470	27	129	1,8	1455	700 - 980
INNOVA 1.5ft WB ABS 5500/840	45	5500	4850	37	131	1,8	1455	700 - 980
INNOVA 1.5ft WB ABS 8000/840	45	8000	6960	54	129	1,8	1455	700 - 980

INNOVA 1.4ft WB ABS 3200/840 = suitable replacement for T8 fl. tube light fitting PRIMA 136 – 1 x 36 W
 INNOVA 1.4ft WB ABS 6400/840 = suitable replacement for T8 fl. tube light fitting PRIMA 236 – 2 x 36 W
 INNOVA 1.5ft WB ABS 4000/840 = suitable replacement for T8 fl. tube light fitting PRIMA 158 – 1 x 58 W
 INNOVA 1.5ft WB ABS 8000/840 = suitable replacement for T8 fl. tube light fitting PRIMA 258 – 2 x 58 W

INNOVA WB ABS

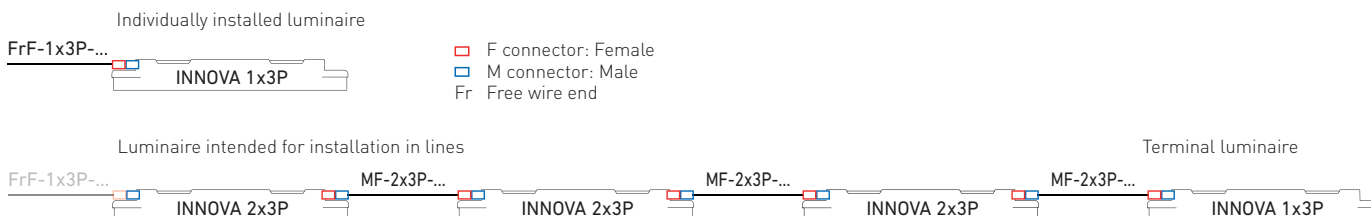
Diffuser made of translucent acrylate

Type	1x3P	1x5P	1x5P DALI	1x7P DALI	2x3P	2x5P	2x5P DALI	2x7P DALI
INNOVA 1.4ft WB ABS 2600/840...	72611	72612	72613	72614	72615	72616	72617	72618
INNOVA 1.4ft WB ABS 3200/840...	72621	72622	72623	72624	72625	72626	72627	72628
INNOVA 1.4ft WB ABS 4400/840...	72631	72632	72633	72634	72635	72636	72637	72638
INNOVA 1.4ft WB ABS 6400/840...	72641	72642	72643	72644	72645	72646	72647	72648
INNOVA 1.5ft WB ABS 3250/840...	72651	72652	72653	72654	72655	72656	72657	72658
INNOVA 1.5ft WB ABS 4000/840...	72661	72662	72663	72664	72665	72666	72667	72668
INNOVA 1.5ft WB ABS 5500/840...	72671	72672	72673	72674	72675	72676	72677	72678
INNOVA 1.5ft WB ABS 8000/840...	72681	72682	72683	72684	72685	72686	72687	72688

Example of type marking: 72643 = INNOVA 1.4ft WB ABS 6400/840 **1x5P DALI**

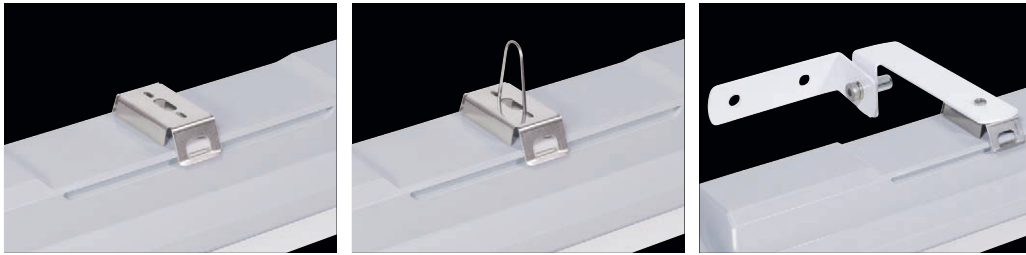
LEGEND

- 1x3P** - version with fixed output driver and 1x3P connector, individually installed / terminal luminaire in line
- 1x5P** - version with fixed output driver and 1x5P connector, terminal luminaire in line
- 1x5P DALI** - version with digitally dimmable driver and 1x5P connector, individually installed / terminal luminaire in line
- 1x7P DALI** - version with digitally dimmable driver and 1x7P connector, terminal luminaire in line
- 2x3P** - version with fixed output driver, 2x3P connectors and 3-wire throughwiring (1F), for installation in lines
- 2x5P** - version with fixed output driver, 2x5P connectors and 5-wire throughwiring (3F), for installation in lines
- 2x5P DALI** - version with digitally dimmable driver, 2x5P connectors and 5-wire throughwiring (3F), for installation in lines
- 2x7P DALI** - version with digitally dimmable driver, 2x7P connectors and 7-wire throughwiring (DALI 3F), for installation in lines



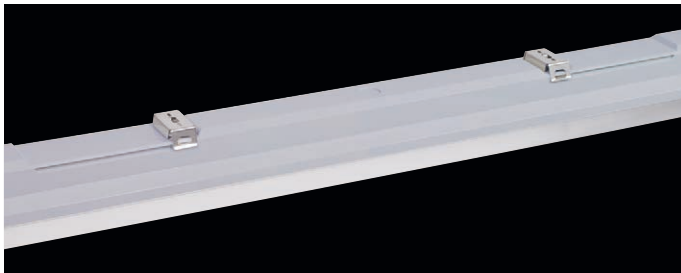
LIGHT FITTING ATTACHMENT

- a) Directly to a ceiling with the use of screws and stainless brackets
- b) Suspension with the use of stainless hooks
- c) Attachment with the use of side hangers to the wall

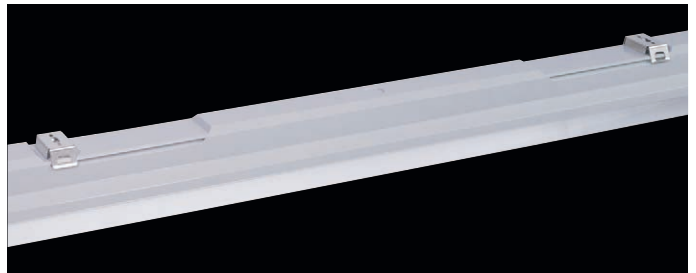


VARIABLE INSTALLATION PITCH

MINIMUM



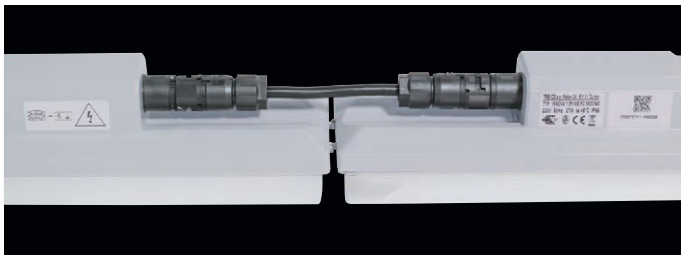
MAXIMUM



LIGHT FITTING INTERCONNECTION

Easy, fast and maximally efficient mounting is achieved when using the cables with connectors delivered by us.

Interconnection of light fittings without spacing



LIGHT FITTING DETAILED VIEW

INNOVA WB ABS

