



MASTER VALUE LEDspot MV

MASTER LED spot VLE DT 6.2-80W GU10 927 36D

Delivering a warm, halogen-like accent beam, MASTER VALUE LEDspot MV is a perfect for spot lighting. Thanks to its high CRI, it realizes more natural colors, enabling cozy and comfortable ambience for residential, hospitality and emphasize the beauty of merchandise in retail. These LEDspots have the familiar look and feel of glass spots, keeping the classic beauty of glass spots and adding the strong performance from LED technology. The dimming function enables to create the desired atmosphere and it works with broad selection of dimmers.

Warnings and Safety

- Operating temperature range is between -20° C and 45° C ambient
- Only to apply in dry or damp locations and most of open fixtures with lamp-holders that offer sufficient space (10 mm free air space)
- Not intended for use with emergency light fixtures or exit lights

Product data

General information	
Cap-Base	GU10 [GU10]
EU RoHS compliant	Yes
Nominal Lifetime (Nom)	25000 h
Switching Cycle	50000X
Technical Type	6.2-80W
Flux measurement reference	Narrow Cone
Light technical	
Color Code	922-927 [CCT of 2200K-2700K]
Beam Angle (Nom)	36 °
Luminous Flux (Nom)	575 lm

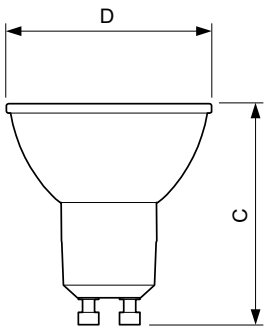
Luminous Intensity (Nom)	950 cd
Color Designation	Warm White (WW)
Correlated Color Temperature (Nom)	2700 K
Luminous Efficacy (rated) (Nom)	92.00 lm/W
Color Consistency	<6
Color Rendering Index (Nom)	90
LLMF At End Of Nominal Lifetime (Nom)	70 %
Luminous Flux in 90° Cone (Rated)	575 lm
Operating and electrical	
Input Frequency	50 to 60 Hz
Power (Nom)	6.2 W

MASTER VALUE LEDspot MV

Lamp Current (Nom)	33 mA
Wattage Equivalent	80 W
Starting Time (Nom)	0.5 s
Warm Up Time to 60% Light (Nom)	0.5 s
Power Factor (Nom)	0.88
Voltage (Nom)	220-240 V
Temperature	
T-Case Maximum (Nom)	75 °C
Controls and dimming	
Dimmable	Only with specific dimmers
Mechanical and housing	
Bulb Shape	PAR16 [PAR 2 inch]
Approval and application	
Energy Efficiency Class	F

Suitable For Accent Lighting	Yes
Energy Consumption kWh/1000 h	7 kWh
EPREL Registration Number	387456
Product data	
Full product code	871869966271400
Order product name	MASTER LED spot VLE DT 6.2-80W GU10 927 36D
EAN/UPC - Product	8718699662714
Order code	929002065902
Numerator - Quantity Per Pack	1
Numerator - Packs per outer box	10
Material Nr. (12NC)	929002065902
Net Weight (Piece)	0.040 kg

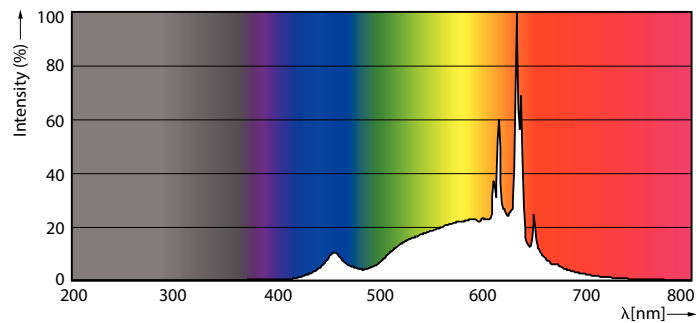
Dimensional drawing



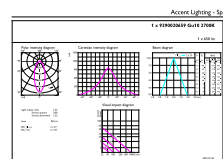
MASTER LED spot VLE DT 6.2-80W GU10 927 36D

Product	D	C
MASTER LED spot VLE DT 6.2-80W GU10 927 36D	50 mm	56 mm

Photometric data



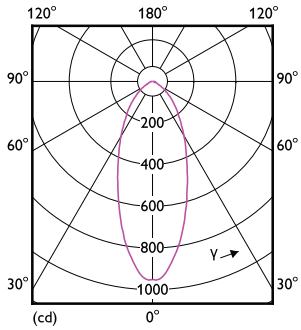
Spectral Power Distribution Colour



Accent Lighting Spots

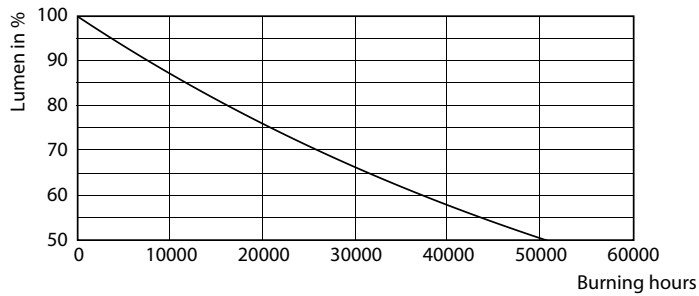
MASTER VALUE LEDspot MV

Photometric data

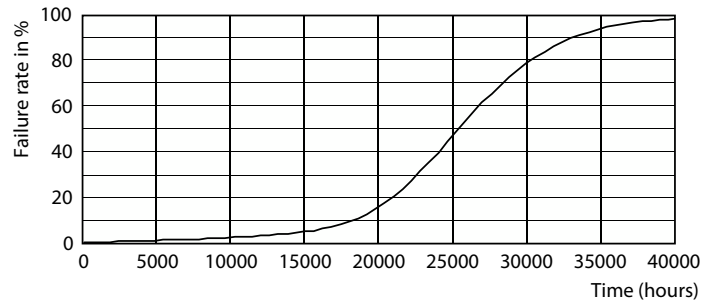


Light Distribution Diagram

Lifetime



25K LMP



25K LED

